

PROSPECTUS

**YOUR
TIME**
EDUCATION



**A NEW EDUCATION
PATHWAY SUPPORTING
YOUNG PEOPLE TO ENGAGE
DEVELOP AND ACHIEVE**



THE BLGC

ST

H





RY

1889 – a time of great industrial and social change. There was nowhere decent and affordable for the young people to hang out after a hard day at the mill. Five elders – church leaders and industrialists – came to the rescue, buying an old warehouse in Bark Street and opening a hostel where the young workers could wash, eat, and sleep safely. Bolton Lads & Girls Club (BLGC) was born.

The mills are long gone, but BLGC is still going strong welcoming over 4,000 young people through our doors every year. Now one of the largest youth clubs in the UK and at our out-of-this-world new home Infinity, we have something for everyone including sports, arts, mentoring and community outreach work as well as some extras for those who need it most. **And now our new Education Offer – Your Time.**





**ANYONE WHO
HAS NEVER
MISTAKE HA
TRIED ANYT**

A woman with braids is focused on her work at a computer workstation in a dimly lit office. She is wearing a dark top and has her hands on the keyboard. Another person, wearing a light-colored cardigan, stands behind her, looking on. The scene is illuminated by warm orange light from the computer screen and cooler blue light from the background. The overall mood is one of concentration and collaboration.

**WHO
MADE A
AS NEVER
THING NEW.**





are Your Time education?

At Your Time, we are committed to providing alternative educational provision that caters to the unique needs of young people. With a team of highly experienced and qualified teachers and engagement mentors, we offer a supportive environment for students to thrive. Our focus is on delivering accredited programs such as ASDAN and Arts Award, along with GCSE options where available, ensuring holistic development and increased attainment outcomes. Led by our Director of Education, Ivan Crompton, EdD, our team provides comprehensive training and support for teachers, pastoral staff, and SLT, encompassing various needs including Neurodivergent, ASC, ADHD, and SEMH.





**DON'T
WAIT FOR
OPPORT
CREATE**

R U N I T Y .



WVH

WE WILL DO



Our programs are designed to meet the diverse needs of students across different age groups. For primary KS/2 students, our "Inspire" program aims to identify barriers to development early on and provide support to foster positive choices and educational pathways.

At KS3/4, our "Tasting Success" initiative offers short-term interventions to re-engage young people in education, focusing on literacy, numeracy, humanities, and creative subjects. Additionally, our "Your Time" program provides a comprehensive framework for young people to build foundations for their future aspirations, incorporating emotional well-being, creativity, outdoor learning, and tangible outcomes.



4 PATHWAYS.



Primary KS/2 Inspire

Programs to engage and inspire young people to make positive choices and create a pathway to ensure barriers to development and achievement are identified earlier so young people can thrive in education. Transition work with schools / academies both pre and post interventions ensure a continuity of support and regular reporting to key staff supports whole staff development and understanding of the young person's individual need.

£100 per pupil per day





YOUR TIME

KS3/4

Tasting success

Tasting Success prioritises short term interventions that can help bring about real change, equipping young people to re-engage in education. There will be times when a more bespoke longer-term offer is required especially at KS4.

he structure of the curriculum seeks to address the serious issue of cumulative disfluency that many of our students have experienced.

Support students to improve levels of literacy and numeracy through the core subjects of English, Maths and Science. In English this will include developing students' vocabulary and a love of reading because of the correlation between vocabulary size and life chances.

Humanities / Creative subjects will provide a breadth of curriculum offer and engage students with skills they may not have had chance to be successful in. Tasting Success aims to develop our students as better thinkers. Developing thinking skills means designing learning- to engage them in better quality thinking. Part of our curriculum intent is to make learning and thinking skills more visible in particular the 4 key areas of:

- Problem-Solving and Decision-Making
- Managing Information
- Effective Enquiry
- Creative Thinking

Transition work with schools / academies both pre and post interventions ensure a continuity of support and regular reporting to key staff supports whole staff development and understanding of the young person's individual need.

£100 per pupil per day

Your Time

Programs, accreditation and qualifications to provide young people with foundations to build upon. It's their time with the support of BLGC to find a pathway to making their future aspirations as positive and worthwhile as they can. A mixture of emotional wellbeing, creativity, health and md nutrition, outdoor Scandinavian based learning and tangible outcomes ensures engagement and positive destinations and outcomes are attainable addressing all needs

Price to be discussed

SENSE

Special
Educational
Needs
Successfully
Engaged

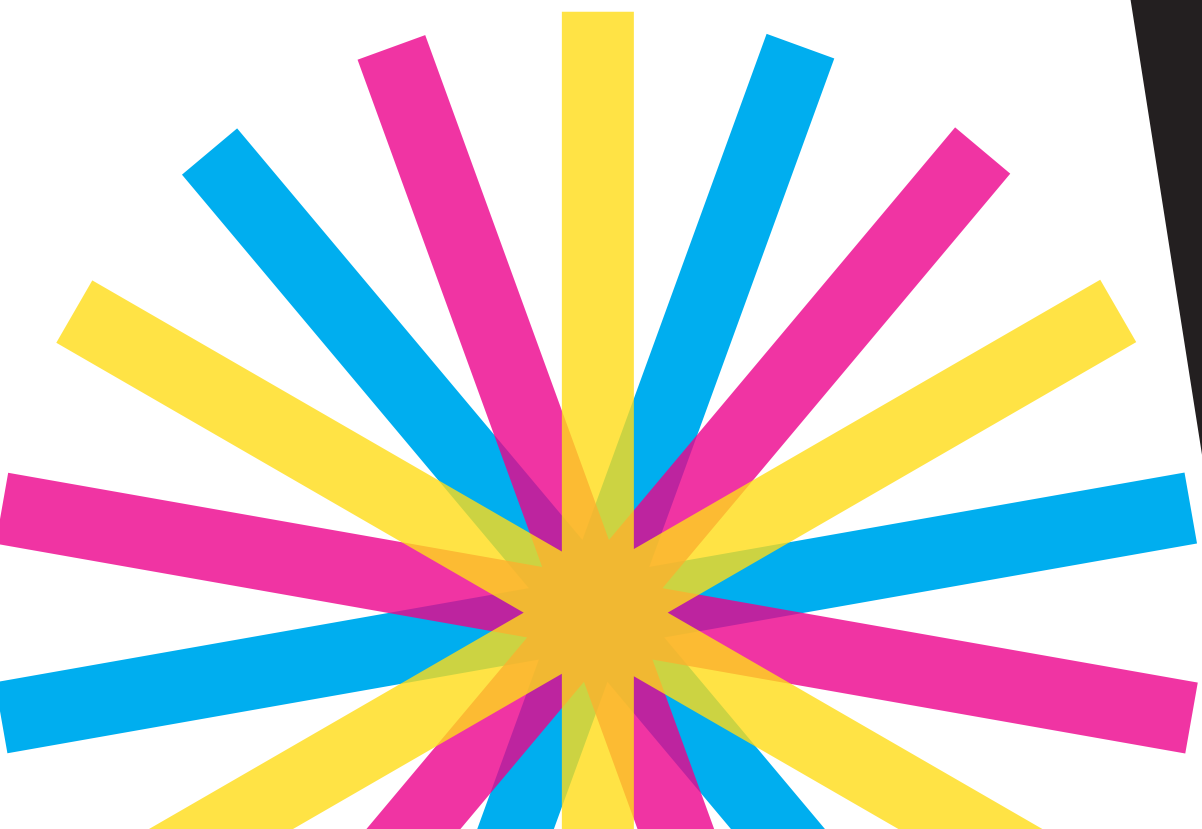
A program for young people with specific identified needs be that SEMH, C&I, Cognitive, Physical and EBSA to engage in research-based programs to support personal growth, remove specific barriers and ensure motive outcomes are worked towards.

Supporting young people with identified needs (EHCP / Diagnosis / EBSA) to make sense of the world and support the unique individual they are to overcome any barriers they may face both internal and external

£100 per pupil per day



SONNEN
WIND





ARE WE DOING THIS

Your Time Education is driven by a commitment to support young people in overcoming barriers and achieving their full potential. Our flexible referral process allows students to join interventions at any time, ensuring tailored support and a smooth transition both in and out of our programs.

NEXT STEP

For further information or to discuss how BLGC Education – Your Time can support your educational needs, please contact:

IVAN CROMPTON, DIRECTOR OF EDUCATION

PHONE: 07787254982

EMAIL: EDUCATION@BLGC.CO.UK

WEBSITE: WWW.BLGC.CO.UK/EDUCATION

